

PT1000 Temperature Sensors

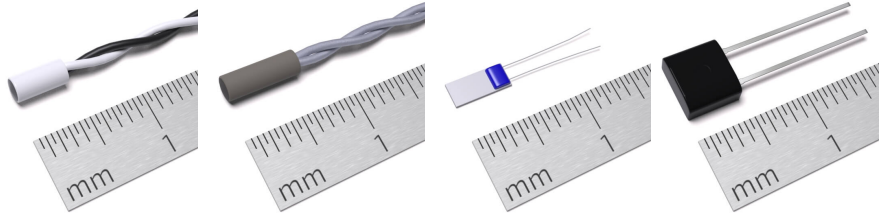
Datasheet

Functions

The PT1000 temperature sensors are durable, robust and cover a wide temperature range. They are used to measure the temperature in a variety of applications such as laboratory equipment and experimental setups.

Key Features

- ✓ PT1000
- ✓ Outer material: stainless steel, ceramic, plastic material
- ✓ 2- and 4-wires
- ✓ Flexible, versatile, robust



Name / Order Number: BAT -	TS-K260	TS-K540	TS-D500	TS-T092-1
Type of sensor	PT1000 class B	PT1000 class B	PT1000 class B	PT1000 class B
Measurement range [°C]	-200...260	-75...540	-70...500	-50...150
Dimensions of the sensor [mm]	Ø2.18x4.75	Ø2.18 x 6.35	4.1 x 2.1 x 0.9	4.2 x 4.1 x 2.6
Outer material	Ceramic	Ceramic	Ceramic	Duroplast
Wire length [mm]	300	300	10	12
Response time [s]	<1	<1	<1	>1
Connection type	2 wire	2 wire	2 wire	2 wire



Name / Order Number: BAT -	TS-S200	TS-S400	TS-S200-8
Type of sensor	PT1000 1/3 DIN	PT1000 1/3 DIN	PT1000 1/3 DIN
Measurement range [°C]	-50...200	-50...400	-50...200
Dimensions of the sensor [mm]	Ø3x30	Ø3x30	Ø3x30
Outer material	stainless steel	stainless steel	stainless steel
Wire length [mm]	2000	2000	2000
Response time [s]	>1	>1	>1
Connection type	4 wire	4 wire	Plug 8polar