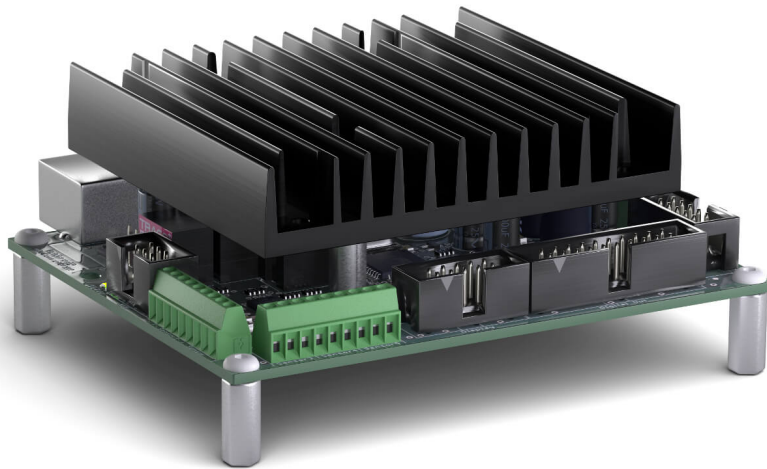


Built- in Temperature Controller **BTC-OEM**

Short Information New Features



New Features of BTC-OEM Series in Comparison to Built-in Controller Model Year 2015

Firmware

New: Optimized PID control algorithm

- › 2 sets of PID parameter for non-linear control loops (e.g. Peltier elements)
- › Separate temperature ramps for heating and cooling
- › Improved anti-windup

New: Customer-specific data programmable

- › Up to 16 byte
- › E.g. individual serial numbers

New: Behaviour after starting the controller programmable

- › Stand-by (controller off)
- › Continuing control

Case Fans/Cooling

New: Connection possibility

- for external fans
- › 12 V output voltage
- › Flatter heat sink with fan mounting option

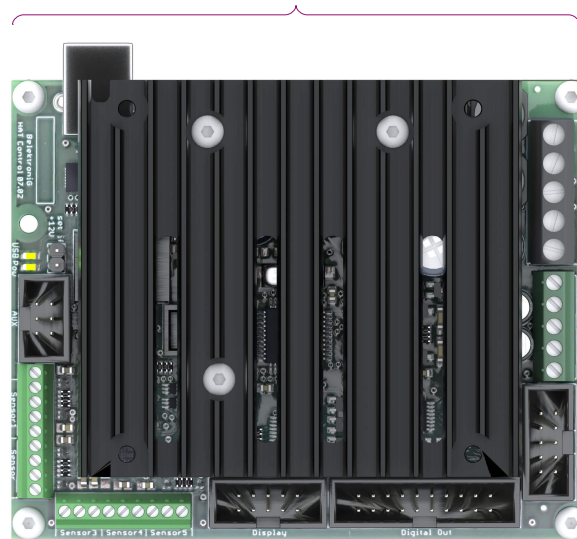
AUX

New: Serial UART interface

Sensors 1, 2

New: Extended functionality

- › Measurement range: -200...800°C
- › Higher sampling rate
- › Thermoelements type- J, -K can be used
- › Any sensor response curve programmable by spline-interpolation



Control Output

New: Improved EMC properties of the PWM output signal

Fan Control 1, 2

- New:** Pre-programmed functions
- › Additional logical functions for rotational speed
 - › Soft start of the fan

Sensors 3, 4, 5

New: Measurement range of analogue sensors adjustable: 0.25, 0.5, 1, 2, 4, 5 V

Digital Out

- New:** Logical functions pre-programmed
- › Display setpoint temperature reached
 - › Display error signal
 - › Condition heating / cooling
 - › and more